



WATCH THE INSTRUCTIONAL VIDEO:
microjig.com/sg-instructions

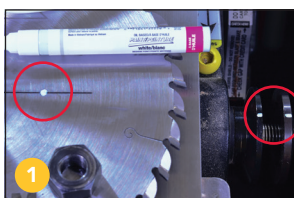
Setting up the MATCHFIT Setup Gauge for use with the Dado Stop

WARNING! Your MATCHFIT Setup Gauge and Dado Stop Pro are designed to be used in conjunction with a table saw. Make sure you are familiar with the operation of your saw before attempting any of the techniques presented within this manual. MICROJIG Inc. assumes no liability for any product not manufactured by it. The user must take all necessary precautions when operating a table saw or any other tools as recommended by their manufacturers and as required by any prudent tool user.

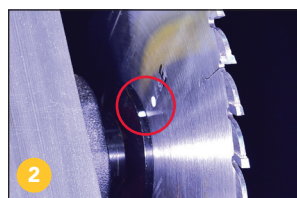
IMPORTANT: Run-out varies from table saw to table saw, saw blade to saw blade, or a combination of both. *Each calibrated MATCHFIT Setup Gauge works with only one saw blade and table saw combination.*

FOR BEST RESULTS: ALIGN YOUR BLADE

To ensure precise fitting dados when changing saw blades, prepare the blade with a *reference point*. This allows you to quickly realign your blade to the original setting of your Setup Gauge.



Use an oil-based paint marker to draw reference dots on the arbor flanges, saw blade, and stiffener (if applicable).



Align all reference dots each time this saw blade is installed on this table saw.

TRIMMING THE BLADE KERF

NOTE: The Setup Gauge works as a template capturing the exact kerf of your saw blade for repeatable and consistent dado setups. *Proceed carefully, as you can make only one cut per Setup Gauge.*



Rip a piece of 3/4" MDF to 4" wide. Do not move the fence until after trimming is complete, see **5**.
NOTE: Using MDF is preferred over solid wood or plywood.



Place the Setup Gauge next to the blade. Raise the saw blade to the height of the center notch.



Using a Dovetail Clamp, attach the Setup Gauge to the miter gauge. It should gently touch the edge of the MDF without pinching or binding and sit square on the tabletop.



Push the miter gauge forward and backward slightly, making sure the Setup Gauge does not drag along the MDF.



Trim the lower portion of the Setup Gauge.

NOTE: *Proceed carefully, you can make only one cut per Setup Gauge.*



1. Measure width of upper untrimmed section of the Setup Gauge.
2. Reset caliper to zero.
3. Measure width of trimmed section.

This number is the kerf this blade and saw are cutting including any run-out.

Write this number along with the table saw and blade you are using in the space provided on the Setup Gauge for future reference.

Get more out of your table saw.

Get detailed information on how to tune up your table saw sent directly to your inbox when you become an MJ Insider. Go to MICROJIG.com/newsletter and enter your email address to subscribe today.

WARRANTY REGISTRATION: Register your product at microjig.com/warranty

Explore more about MATCHFIT Dadostop: Visit microjig.com/dadostop

MATCHFIT is a trademark of MICROJIG. A true Micro Jig innovation. © 2019 US MICROJIG.com